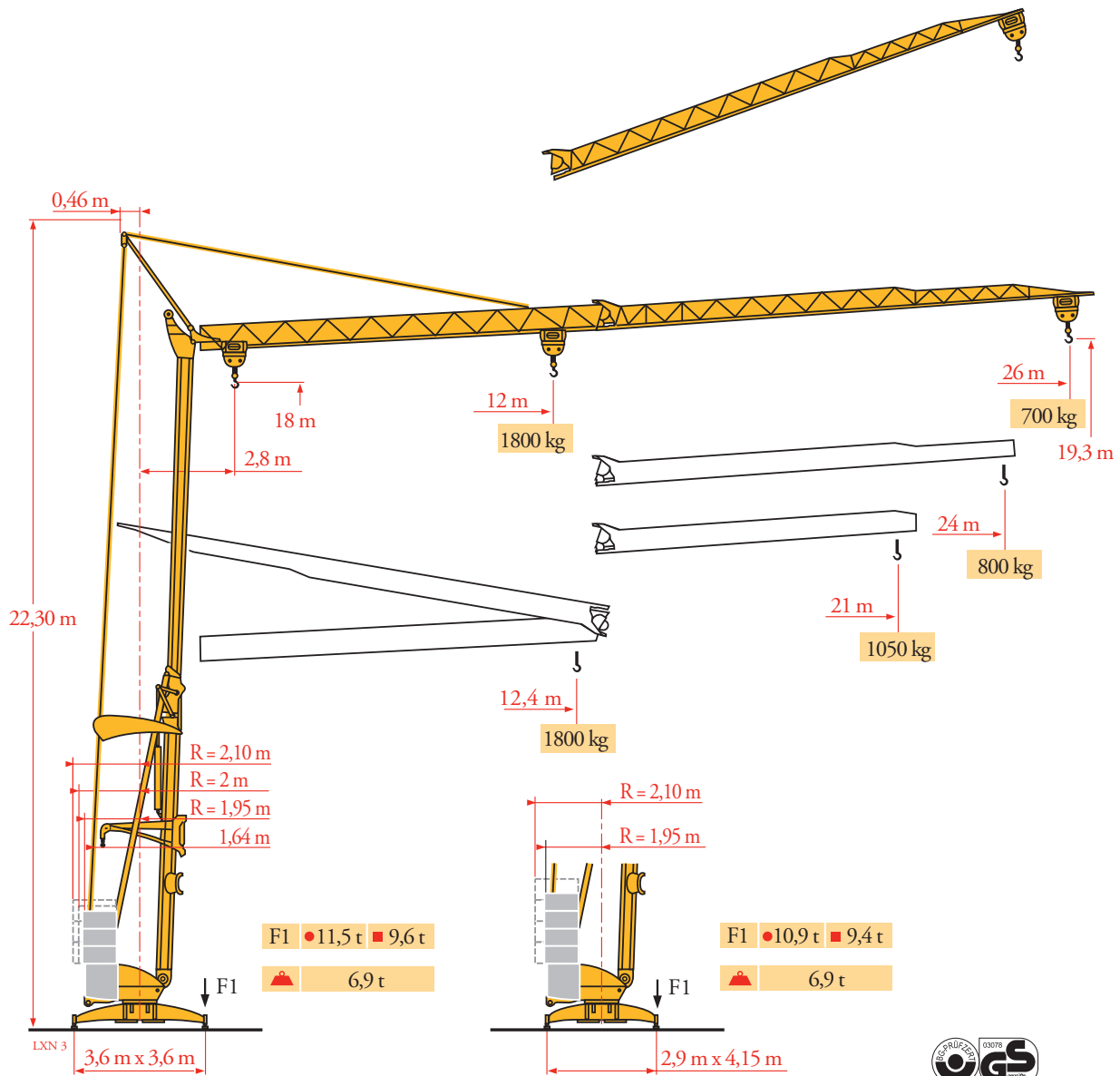
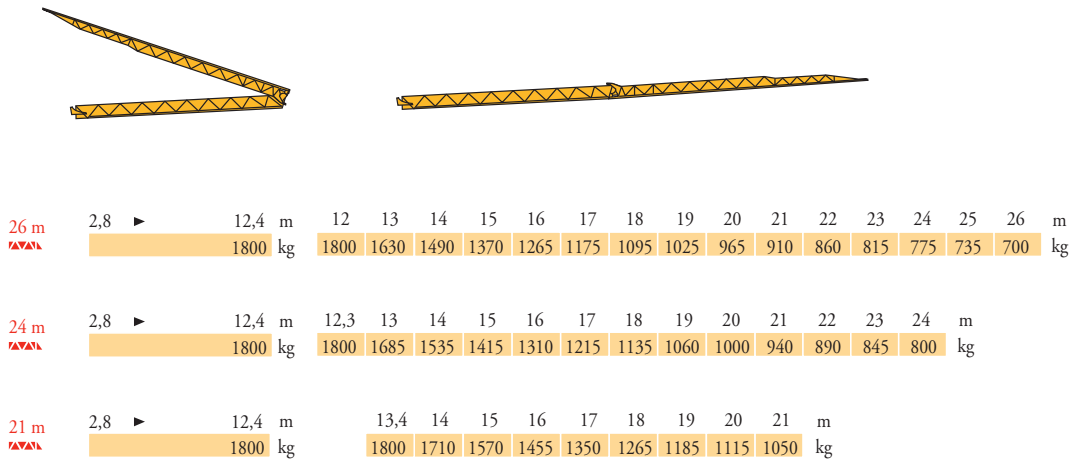


Potain Igo 21



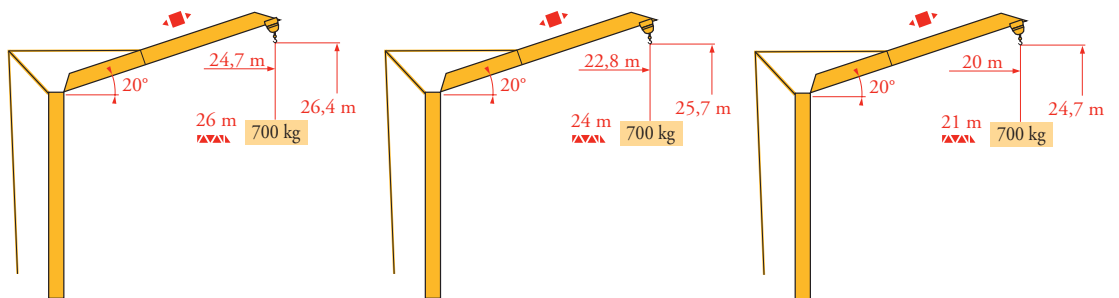
Courbes de charges
Lastkurven
Load diagrams
Curvas de cargas
Curve di carico
Curva de cargas
Диаграммы
грузоподъемностей

LXN 3



Flèche relevée
Ausleger in
Steilstellung
Luffing jib
Flecha izada
Braccio impennato
Lança inclinada
Маховая стрела





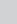






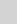







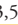





LXN 3

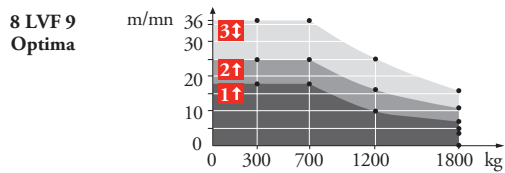


- | | | | | | | |
|--|---|---|---|--|---|--|
| <p>FR</p> <p>▲ Chariot distributeur ● Réactions en service ■ Réactions hors service</p> <p>▲ A vide sans lest (ni train de transport) avec flèche et hauteur maximum.</p> | <p>DE</p> <p>▲ Verfahrbare Laufkatze ● Reaktionskräfte in Betrieb ■ Reaktionskräfte außer Betrieb</p> <p>▲ Ohne Last, Ballast (und Transportachse), mit Maximalausleger und Maximalhöhe.</p> | <p>EN</p> <p>▲ Traversing trolley ● Reactions in service ■ Reactions out of service</p> <p>▲ Without load, ballast (or transport axes), with maximum jib and maximum height.</p> | <p>ES</p> <p>▲ Carro distribuidor ● Reacciones en servicio ■ Reacciones fuera de servicio</p> <p>▲ Sin carga, sin lastre, (ni tren de transporte), flecha y altura máxima.</p> | <p>IT</p> <p>▲ Carrellino distributore ● Reazioni in servizio ■ Reazioni fuori servizio</p> <p>▲ A vuoto, senza zavorra (ne assali di trasporto) con braccio massimo e altezza massima.</p> | <p>PT</p> <p>▲ Carro distribuidor ● Reações em serviço ■ Reações fora de serviço</p> <p>▲ Sem carga (nem trem de transporte)- sem lastro com lança e altura máximas.</p> | <p>RU</p> <p>▲ Грузовая тележка ● Реакции при работе ■ Реакции в покое</p> <p>▲ Вес без груза, балласта (или транспортных осей), с максимальной длиной стрелы и максимальной высотой.</p> |
|--|---|---|---|--|---|--|

Mécanismes
Antriebe
Mechanisms
Mecanismos
Meccanismi
Mecanismos
Механизмы

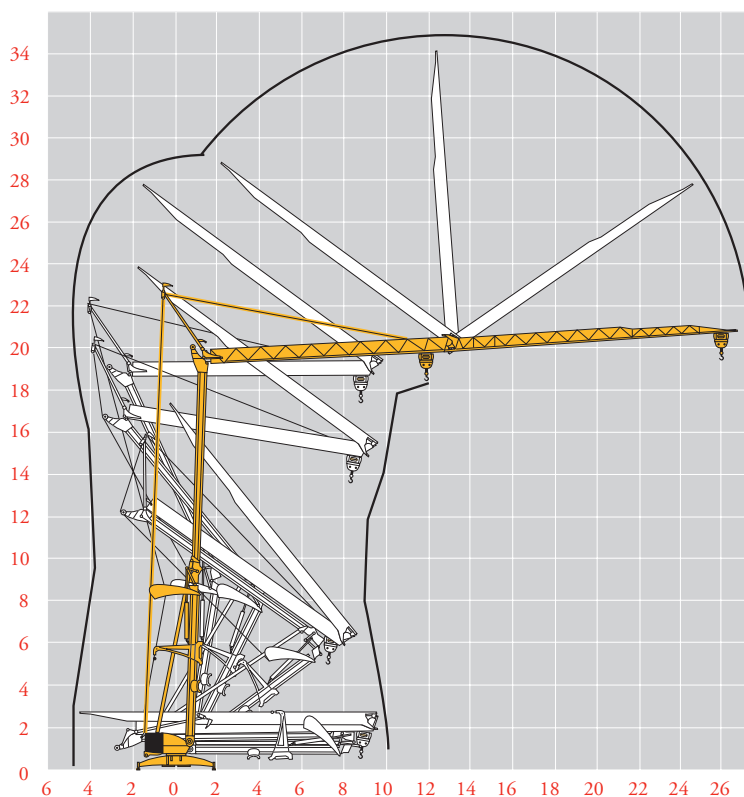
LXN 5

| | | | | |  |  |  | ch - PS hp | kW | | |
|---|-----------------------|---|---------------------|---|---|---|--|--|--|-----|-----|
|  | 8 LVF 9 Optima | 230 V  | m/min |  3,5 |  3,5 |  7 |  16 |  18 |  36 | 3,3 | 2,4 |
| | | 20 A 1 | kg | 1800 | 1800 | 1800 | 700 | | | | |
| | | 230 V  | m/min |  3,5 |  3,5 |  11 |  16 |  25 |  36 | 5,2 | 3,8 |
| | | 32 A 2 | kg | 1800 | 1800 | 1800 | 700 | | | | |
| | | 400 V 3 | m/min |  3,5 |  16 |  36 | | | | 7,5 | 5,5 |
| | | | kg | 1800 | 1800 | 700 | | | | | |
|  | 1 DVF 4 | - | m/min | 14 → 36 (0 → 700 kg) - 14 → 28 (700 → 1800 kg) | | | | 1,5 | 1,1 | | |
|  | RVF 20 | - | tr/min U/min rpm | 0 → 1 | | | | 1,5 | 1,1 | | |
| | | CEI 38  | IEC 38 | | | | | kVA | | | |
| | | 230 V(+6% -10%) 50 Hz  | | 230 V 20 A: 4,6 kVA 230 V 32 A: 7,4 kVA | | | | 400 V: 11 kVA | | | |
| | | 400 V(+6% -10%) 50 Hz | | | | | | | | | |



Montage
Montage
Erection
Montaje
Montaggio
Montagem
Монтаж

LXN 3



FR



Levage
Distribution
Orientation
50 Hz Monophasé

DE

Heben
Katzfahren
Schwenken
50 Hz Einphasige

EN

Hoisting
Trolleying
Slewing
50 Hz Single phase

ES

Elevación
Distribución
Orientación
50 Hz Monofásica

IT

Sollevamento
Distribuzione
Rotazione
50 Hz Monofase

PT

Elevação
Distribuição
Rotação
50 Hz monofásica

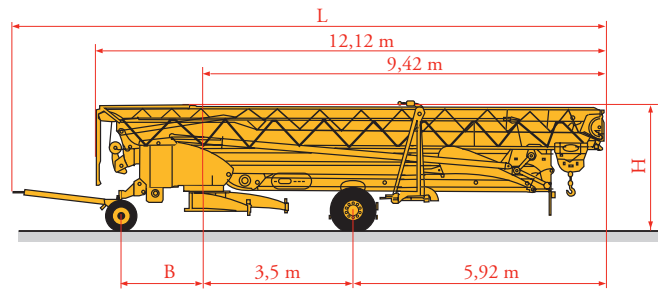
RU

Подъем
Перемещение каретки
Поворот
Однофазное напряжение 50Hz

Transport
 Transport
 Transport
 Transporte
 Trasporto
 Transporte
 Транспортировка

LXN 4

- DS51/S70 ○
- DS61/S80 ○
- DS61/S120 ○
- DS61/S125 ○
- DJ80/S120 ○
- DJ80/S125 ○
- DJ100/S120 ○
- DJ105/S125 ○
- DJ126M/S125 ○



| | L (m) | B (m) | H (m) |
|-------------|-------|-------|-----------|
| DS51/S70 | 14,07 | 2,33 | 2,85/3 |
| DS61/S80 | 14,5 | 2,43 | 2,85/3 |
| DS61/S120 | 14,5 | 2,43 | 2,85/3 |
| DS61/S125 | 14,5 | 2,43 | 2,85/3 |
| DJ80/S120 | 14,5 | 2,43 | 3,03 |
| DJ80/S125 | 14,5 | 2,43 | 3,03 |
| DJ100/S120 | 14,5 | 2,43 | 3,36/3,21 |
| DJ105/S125 | 14,5 | 2,43 | 3,36/3,21 |
| DJ126M/S125 | 14,95 | 2,43 | 4 |

FR

○ Chantier

DE

○ Baustelle

EN

○ Site

ES

○ Obra

IT

○ Cantiere

PT

○ Estaleiro

RU

○ По строительной площадке



Document commercial non contractuel. Pour toute information technique se référer à la notice correspondante.

Unverbindliches Vertriebsdokument. Für technische Informationen, siehe die entsprechenden Anweisungen.

This commercial document is not legally binding. For any technical information, please refer to the corresponding instructions.

Documento commercial no contractual. Para cualquier información técnica, ver la noticia correspondiente.

Documento commerciale non vincolante, per tutte le informazioni tecniche fare riferimento al catalogo istruzioni.

Documento comercial não contratual. Para qualquer informação técnica complementar consultar as respectivas instruções.

Этот коммерческий документ не является юридически обязательным. Для получения технической информации, см. соответствующие инструкции.



Manitowoc - Americas - World Headquarters

2400 S. 44th Street • Manitowoc • WI 54220 USA
 Tel: +1 920 684 4410 • Fax: +1 920 652 9778

Manitowoc - Europe, Middle East & Africa

Manitowoc France SAS
 18, rue de Charbonnières B.P. 173 • 69132 ECULLY Cedex • FRANCE
 Tel: +33 (0)4 72 18 20 20 • Fax: +33 (0)4 72 18 20 00

Manitowoc - Asia Pacific

16F Xu Hui Yuan Building,
 1089 Zhongshan No.2 Road (S) • Shanghai 200030 China
 Tel: +86 21 6457 0066 • Fax: +86 21 6457 4955